

## Reconstruction of morphosyntactic function: Non-spatial usage of spatial case marking in Tsezic

- 2 -

Michael Cysouw & Diana Forker

Max Planck Institute for Evolutionary Anthropology, Leipzig

Case in and across languages, Helsinki. 28 August 2009.

forker@eva.mpg.de, cysouw@eva.mpg.de

Table 1. Reconstructions of locational markers.

Proto-Tsezic reconstruction	Approximate meaning in spatial domain	Gloss
*-t-	contact	CONT
*-ʔa-	in, inside	IN
*-ʃ-	under	SUB
*-ʃ'o-	on top, above	SPR
*-qo-	attached to	AT
*-de-	near, by (animates)	APUD
*-ho-	near, by (inanimates)	AD
*-yo	near, close	NEAR

Table 2. Reconstructions of directional markers.

Proto-Tsezic reconstruction	Approximate meaning in spatial domain	Gloss
*-∅	essive ('location')	NULL
*-r/l	lative ('orientation towards a goal')	LAT
*-s	ablative ('movement from, or out of')	GEN

Table 3. Spatial case markers in Tsezic.<sup>1</sup>

	Hinuq	CONT	IN	SUB	SPR	AT	APUD	AD
Essive		-t	-V/ma	-ʃ	-ʃ'o	-qo	-de	-ho
Lative		-t-er	-V/ma-r	-ʃ-er	-ʃ'o-r	-qo-r	-de-r	-ho-r
Ablative/Genitive		-t-es	-V/ma-s	-ʃ-es	-ʃ'o-s	-qo-s	-de-s	-ho-s
Ablative		-t-ezo	-V/ma-zo	-ʃ-ezo	-ʃ'o-zo	-qo-zo	-de-zo	-ho-zo
Directive		-t-edo	-V/ma-do	-ʃ-edo	-ʃ'o-do	-qo-do	-de-do	-ho-do
Tsez		CONT	IN	SUB	SPR	AT	APUD	AD
Essive		-t	-ā	-ʃ	-ʃ'(o)	-q(o)	-de	-x(o)
Lative		-t-er	-ā-r	-ʃ-er	-ʃ'o-r	-qo-r	-de-r	-xo-r
Ablative		-t-āy	-ā-y	-ʃ-āy	-ʃ'-āy	-q-āy	-d-āy	-x-āy
Versative		-t-xor	-ā-ʃor	-ʃ-xor	-ʃ'-āʃor/ār	-q-āʃor/ār	-d-āʃor/ār	-x-āʃor/ār
Khwarshi		CONT	IN	SUB	SPR	AT	AD	NEAR
Essive		-t	-(m)a	-ʃ	-ʃ'o	-qo		-ho -yo
Lative		-t-ul	-(m)a-l	-ʃ-ul	-ʃ'o-l	-qo-l		-ho-l -yo-l
Ablative		-t-zi	-(m)a-zi	-ʃ-zi	-ʃ'o-zi	-qo-zi		-ho-zi -yo-zi
Versative		-t-yul	-(m)a-yul	-ʃ-yul	-ʃ'o-yul	-qo-yul		-ho-yul -yo-yul
Translative		-t-yuʒaz	-(m)a-yuʒaz	-ʃ-yuʒaz	-ʃ'o-yuʒaz	-qo-yuʒaz		-ho-yuʒaz -yo-yuʒaz
Terminative		-t-q'a	-(m)a-q'a	-ʃ-q'a	-ʃ'o-q'a	-qo-q'a		-ho-q'a -yo-q'a
Bezhta		CONT	IN	SUB	SPR	AT	APUD	NEAR
Essive		-t	-ʔ	-ʃ	-ʃ'a	-qa	-doy	-ya
Lative			-ʔ-il		-ʃ'a-l		-doy-l	-ya-l
Ablative/Genitive		-t-so	-ʔ-is	-ʃ-so	-ʃ'a-s	-qa-s	-doy-s	-ya-s
Ablative		-t-la	-ʔ-la		-ʃ'a-la			
Directive		-t-daa	-ʔ-daa		-ʃ'a-daa		-doy-da	-ya-daa
Translative		-t-laʃ'ā	-ʔ-(la)ʃ'ā		-ʃ'a-laʃ'ā			-ya-laʃ'ā
Hunzib		CONT	IN	SUB	SPR	AT	APUD	
Essive		-t	-V	-ʃ	-ʃ'(o)	-g(o)	-dər	
Ablative/Genitive		-t-sə	-V-s		-ʃ'o-s	-go-s	-dər-sə	
Translative		-t-ʃ'i	-V-ʃ'		-ʃ'o-ʃ'		-dər-ʃ'i	
Directive		-t-do	-dα-α				-dər-do	

<sup>1</sup> In Khwarshi, all locational markers ending in /o/ have an allomorph ending in /a/. In Bezhta, the IN-Lative and the IN-Ablative/Genitive have allomorphs in which the epenthetic vowel /i/ is either /a/, /e/ or /o/. Also in Bezhta, the APUD morpheme *-doy-*, as found in the texts that we used, is listed as *-der-* in Kibrik & Testelets (2004). This is possibly a dialectal difference.

Table 4. Non-spatial contexts for case marking.

Role	Label	Construction
Addressees	TALK	talk [to somebody]
	TELL	tell [to somebody]
	SHOUT	shout [at somebody]
	SAY	say [to somebody]
	ASK	ask [somebody]
	BEG	beg [somebody]
	EXPLAIN	explain [to somebody]
	TEACH	teach [to somebody]
	ORDER	order [somebody]
Human objects	MARRY	marry [a man]
	FEAR	fear [somebody]
	BELIEVE	believe [somebody]
	LISTEN	listen [to somebody]
Recipients	GIVE (PERMANENTLY)	give X as a gift [to somebody]
	GIVE (TEMPORARILY)	give X to hold [to somebody]
	SHOW	show X [to somebody]
Possessors	INALIENABLE POSSESSION	[somebody] has a daughter
	ALIENABLE POSSESSION	[somebody] has money
Subjects	AGE	[somebody] is X years old
	NAME	[somebody] is called X
	FIND	[somebody] finds X
Objects	EXCHANGE	give X away [for something else]
	PURPOSE/GOAL	go with the goal to get [something]
	LOOK	look [at something]
	METAPHORICAL LOCATION	talk [about something]
Causees	CAUSATIVE	cause [somebody] to do X
Potential agents	POTENTIAL	[somebody] can do X
	ABLE	[somebody] is able to do X
Reasons	NATURAL FORCE	[because of something] X happened
Converbs	SIMULTANEOUS	[while X happened] ...
	TERMINATIVE	[until/before X happened] ...
	CAUSAL	[because X happened] ...
	POSTERIOR	[after X happened]...
Time indications	TIME SPAN	something happened [during period X]
	TIME POINT	something happened [at time X]

(1) Khwarshi (Z. Xalilova, p.c.): recipient of GIVE

- a. *ise heʰʂe ite-l tuʂ-i*  
 he.ERG book she.OBL-LAT give-PST.W  
 ‘He gave her the book.’ (forever, as a gift)
- b. *ise heʰʂe ite-ɣo-l tuʂ-i*  
 he.ERG book she.OBL-NEAR-LAT give-PST.W  
 ‘He gave her the book.’ (only for a certain time)

(2) Hunzib (van den Berg 1995: 69): subject of AGE

*oʉ-s oqʹe-n rig ʂi li*  
 s/he.OBL-GEN four-and ten.OBL year be  
 ‘S/he is forty years old.’

(3) Tsez (B.Comrie, fieldnotes): subject of FIND

*elo yita-r bercinaw kid y-esu-n*  
 there she.OBL-LAT beautiful girl(II) II-find-PST.UNW  
 ‘She found a beautiful girl there.’

(4) Hunzib (Van den Berg 1995: 108): causee of CAUSATIVE

*maduhan-li-l abu-g si b-iʂʹe-kʹ-er*  
 neighbour-OBL-ERG father-AT.ESS bear(III) III-kill-CAUS-PRET  
 ‘The neighbour made father kill the bear.’

Table 5. Non-spatial case marking in Tsezic.

Function	Hinüq		Tsez		Khwarshi		Bezhta		Hunzib	
	Loc	Dir	Loc	Dir	Loc	Dir	Loc	Dir	Loc	Dir
able	AT	NULL	AT	NULL	AT	NULL	AT	NULL	AT	NULL
age	AT	NULL	AT	NULL	AT	NULL	NULL	LAT	NULL	GEN
alienable possession	AT	NULL	AT	NULL	AT	NULL	AT	NULL	-	-
ask	AT	NULL	AT	NULL	AT	LAT	AT	NULL	AT	NULL
beg	AT	NULL	AT	NULL	AT	NULL	AT	NULL	-	-
believe	SPR	NULL	SPR	NULL	SPR	NULL	SPR	NULL	SPR	NULL
causal	-	-	AT	NULL	-	-	AT	NULL	AT	NULL
causative	AT	NULL	AT	NULL	AT	NULL	NULL	INSTR	AT	NULL
exchange	SUB	NULL	SUB	NULL	SUB	NULL	SUB	NULL	SUB	NULL
explain	AT	LAT	NULL	LAT	AT	LAT	NULL	LAT	-	-
fear	AT	NULL	AT	NULL	AT	NULL	AT	NULL	SPR	NULL
find	NULL	DAT	NULL	LAT	NULL	LAT	NULL	LAT	-	-
give (permanently)	NULL	DAT	NULL	LAT	NULL	LAT	NULL	LAT	IN	NULL
give (temporarily)	AT	NULL	AT	NULL	NEAR	LAT	AT	NULL	AT	NULL
inalienable possession	NULL	GEN	NULL	GEN	NULL	GEN	NULL	GEN	NULL	GEN
listen	AT	NULL	AT	LAT	AT	NULL	AT	NULL	-	-
look	SPR	LAT	SPR	LAT	AT	LAT	AT	NULL	AT	NULL
marry	AD	NULL	AD	NULL	AD	NULL	NULL	LAT	IN	NULL
metaphorical location	SPR	NULL	CONT	ABL	NULL	GEN	NULL	GEN	SPR	GEN
name	SPR	NULL	SPR	NULL	SPR	NULL	SPR	NULL	-	-
natural force	AT	NULL	AT	NULL	AT	NULL	AT	NULL	AT	NULL
order	AT	LAT	AT	LAT	NULL	LAT	NULL	LAT	-	-
posterior	NULL	GEN	NULL	GEN	NULL	GEN	NULL	GEN	NULL	GEN
potential	AT	NULL	AT	NULL	AT	NULL	-	-	-	-
purpose/goal	SPR	NULL	SPR	LAT	AD	NULL	IN	LAT	SPR	NULL
say	AT	LAT	AT	LAT	AT	LAT	AT	NULL	AT	NULL
shout	AT	LAT	AT	LAT	AT	LAT	AT	NULL	AT	NULL
show	NULL	DAT	AT	NULL	AT	NULL	NULL	LAT	IN	NULL
simultaneous	SPR	NULL	SPR	NULL	SPR	NULL	IN	NULL	IN	NULL
talk	AT	LAT	AT	LAT	AT	NULL	AT	NULL	AT	NULL
teach	AT	NULL	AT	NULL	AT	LAT	NULL	LAT	IN	NULL
tell	AT	NULL	AT	NULL	AT	NULL	AT	NULL	IN	NULL
terminative	SPR	LAT	SPR	LAT	AD	LAT	NULL	LAT	NULL	LAT
time point	SPR	NULL	SPR	NULL	SPR	NULL	SPR	NULL	-	-
time span	CONT	NULL	CONT	NULL	NULL	INSTR	IN	NULL	CONT	NULL

Figure 1. Multidimensional scaling of the 35 functions according to their case marking in Tsezic.

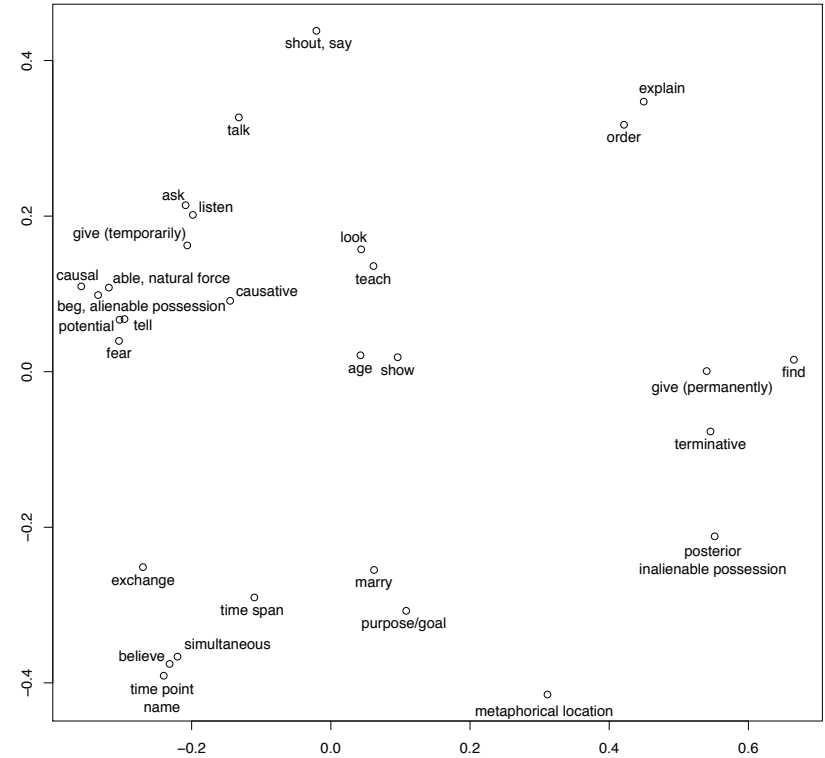


Figure 2. Directional marking in Tsez and Bezhta.

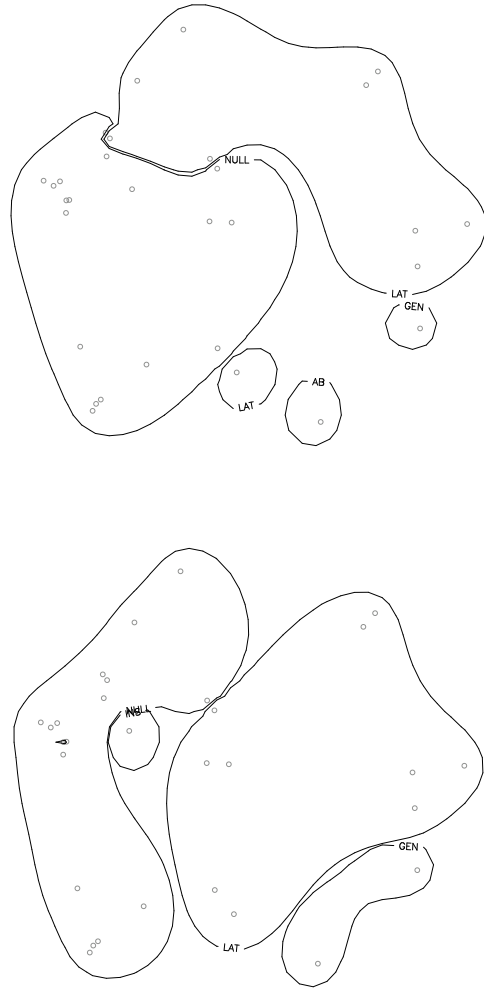


Table 6. Reconstruction of case for 'listen [to somebody]'.  
 (Note: The original image contains a handwritten '6' in the margin next to this caption.)

Language	Case	Reconstruction		
Khwarshi	AT.NULL			
Tsez	AT.LAT	proto-Hinuq/Tsez:	proto-West:	
Hinuq	AT.NULL	*AT.NULL	*AT.NULL	proto-Tsezic:
Bezhta	AT.NULL		proto-East:	*AT.NULL
Hunzib	-		*AT.NULL	

Table 7. Reconstruction of case for 'order [somebody]'.  
 (Note: The original image contains a handwritten '7' in the margin next to this caption.)

Language	Case	Reconstruction		
Khwarshi	NULL.LAT			
Tsez	AT.LAT	proto-Hinuq/Tsez:	proto-West:	
Hinuq	AT.LAT	*AT.LAT	*NULL.LAT	proto-Tsezic:
Bezhta	NULL.LAT		proto-East:	*NULL.LAT
Hunzib	-		*NULL.LAT	

Table 8. Reconstruction of case for simultaneous converb.  
 (Note: The original image contains a handwritten '8' in the margin next to this caption.)

Language	Case	Reconstruction		
Khwarshi	SPR.NULL			
Tsez	SPR.NULL	proto-Hinuq/Tsez:	proto-West:	
Hinuq	SPR.NULL	*SUPER.NULL	*SUPER.NULL	proto-Tsezic:
Bezhta	IN.NULL		proto-East:	*?.NULL
Hunzib	IN.NULL		*IN.NULL	

Figure 3. Unique optimal (unrooted) tree on the basis of non-spatial case marking (according to Maximum Parsimony).

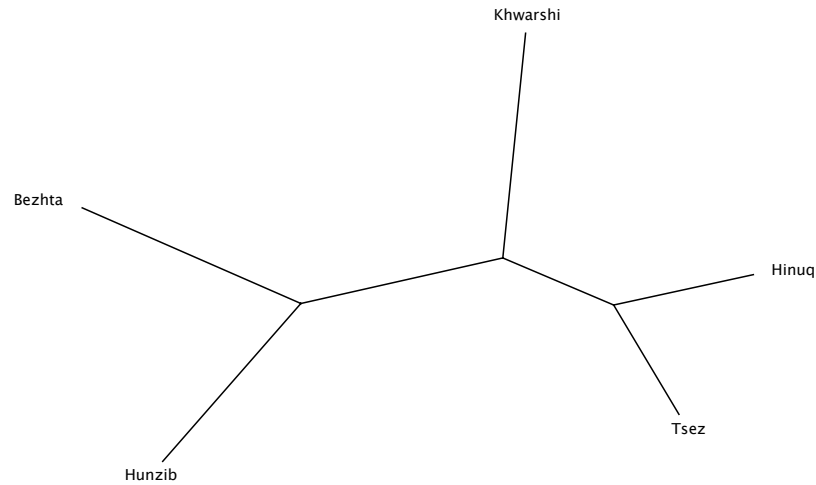
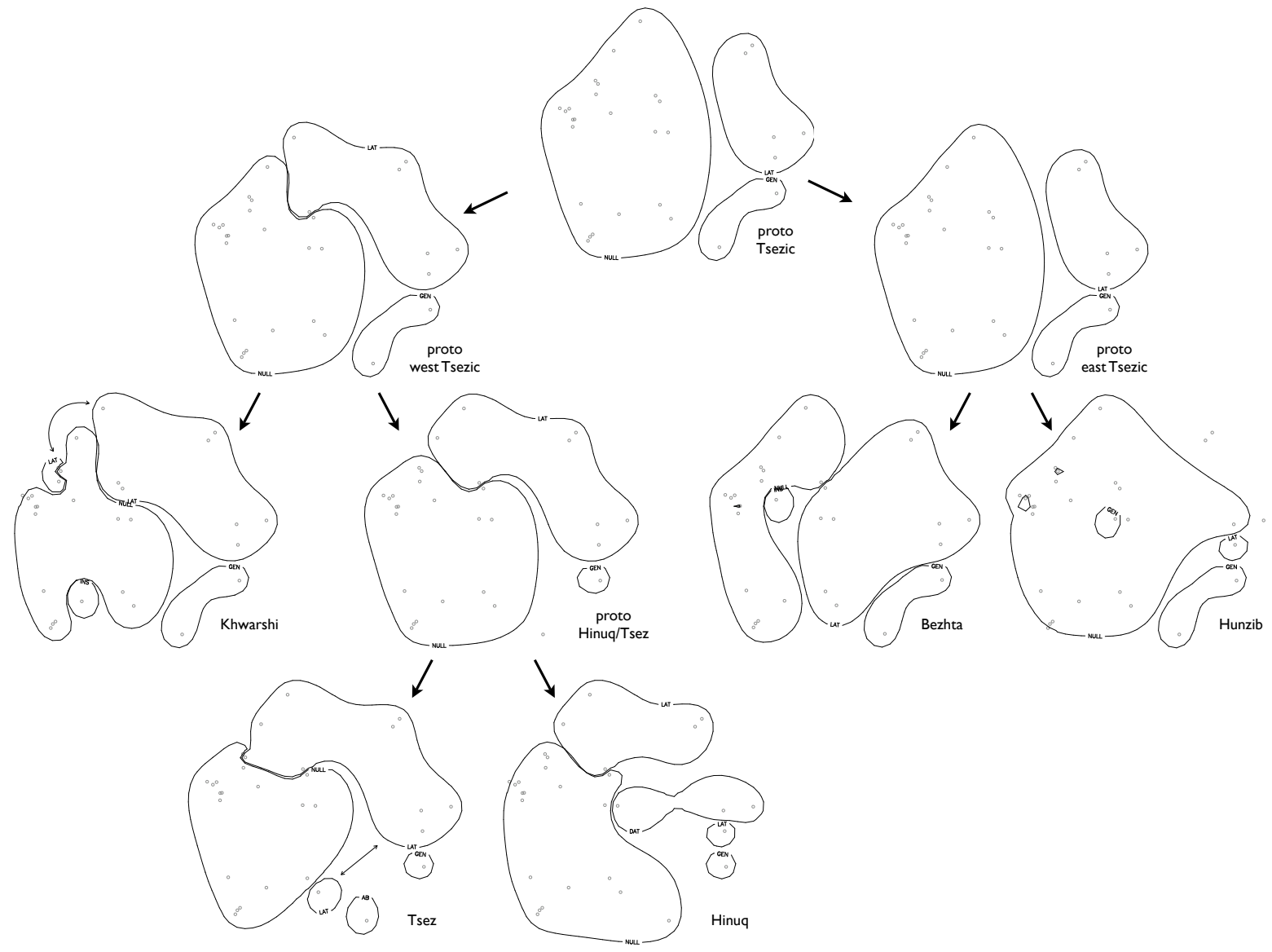


Table 9. Reconstructions of non-spatial case marking.

Functions	proto-Hinuq/Tsez		proto-West Tsezic		proto-East Tsezic		proto-Tsezic	
	Loc	Dir	Loc	Dir	Loc	Dir	Loc	Dir
able	AT	NULL	AT	NULL	AT	NULL	AT	NULL
age	AT	NULL	AT	NULL	AT	NULL	AT	NULL
alienable possession	AT	NULL	AT	NULL	AT	NULL	AT	NULL
ask	AT	NULL	AT	NULL	AT	NULL	AT	NULL
beg	AT	NULL	AT	NULL	AT	NULL	AT	NULL
believe	SPR	NULL	SPR	NULL	SPR	NULL	SPR	NULL
causal	AT	NULL	AT	NULL	AT	NULL	AT	NULL
causative	AT	NULL	AT	NULL	AT	NULL	AT	NULL
exchange	SUB	NULL	SUB	NULL	SUB	NULL	SUB	NULL
explain	NULL	LAT	NULL	LAT	NULL	LAT	NULL	LAT
fear	AT	NULL	AT	NULL	AT	NULL	AT	NULL
find	NULL	LAT	NULL	LAT	NULL	LAT	NULL	LAT
give (permanently)	NULL	LAT	NULL	LAT	NULL	LAT	NULL	LAT
give (temporarily)	AT	NULL	AT	NULL	AT	NULL	AT	NULL
inalienable possession	NULL	GEN	NULL	GEN	NULL	GEN	NULL	GEN
listen	AT	NULL	AT	NULL	AT	NULL	AT	NULL
look	SPR	LAT	AT	LAT	AT	NULL	AT	NULL
marry	AD	NULL	AD	NULL	-	NULL	-	NULL
metaphorical location	-	-	NULL	GEN	NULL	GEN	NULL	GEN
name	SPR	NULL	SPR	NULL	SPR	NULL	SPR	NULL
natural force	AT	NULL	AT	NULL	AT	NULL	AT	NULL
order	AT	LAT	NULL	LAT	NULL	LAT	NULL	LAT
posterior	NULL	GEN	NULL	GEN	NULL	GEN	NULL	GEN
potential	AT	NULL	AT	NULL	-	-	AT	NULL
purpose/goal	SPR	NULL	SPR	NULL	SPR	NULL	SPR	NULL
say	AT	LAT	AT	LAT	AT	NULL	AT	NULL
shout	AT	LAT	AT	LAT	AT	NULL	AT	NULL
show	AT	NULL	AT	NULL	AT	NULL	AT	NULL
simultaneous	SPR	NULL	SPR	NULL	IN	NULL	-	NULL
talk	AT	LAT	AT	NULL	AT	NULL	AT	NULL
teach	AT	NULL	AT	NULL	-	NULL	-	NULL
tell	AT	NULL	AT	NULL	AT	NULL	AT	NULL
terminative	SPR	LAT	NULL	LAT	NULL	LAT	NULL	LAT
time point	SPR	NULL	SPR	NULL	SPR	NULL	SPR	NULL
time span	CONT	NULL	CONT	NULL	CONT	NULL	CONT	NULL

Figure 4. Development of directional case marking.



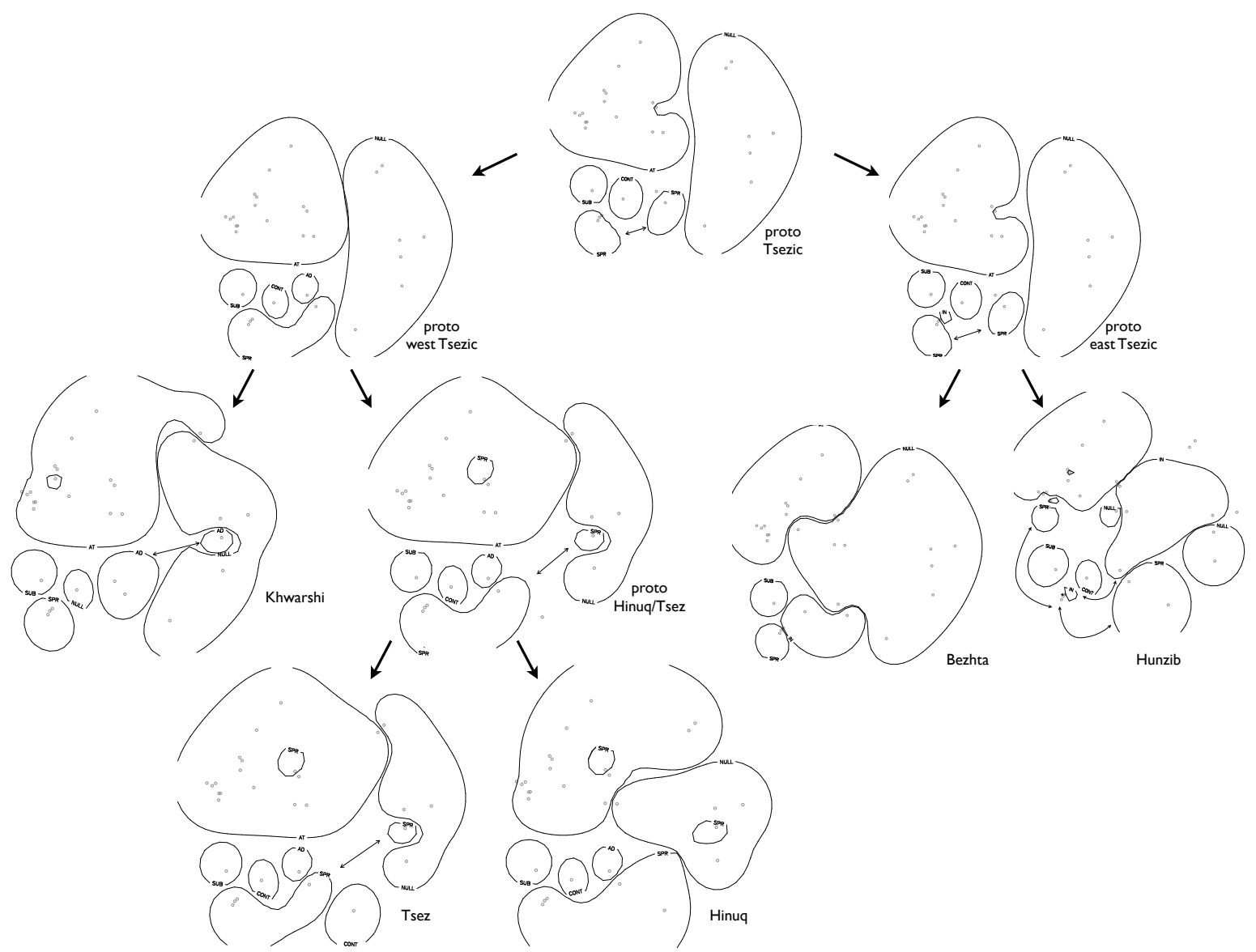
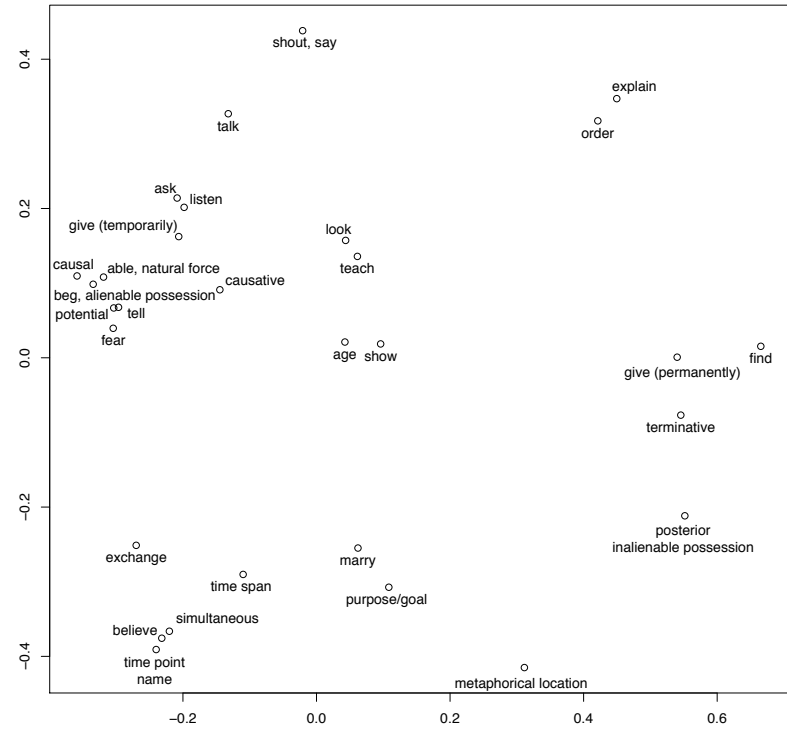
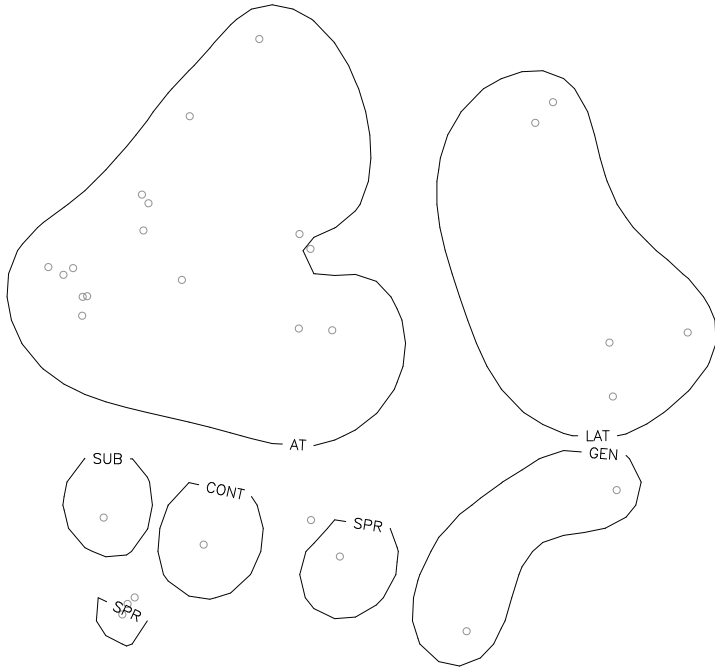


Figure 5. Development of locational case marking.

Figure 6. Summary of non-spatial case marking for proto-Tsezic.





## References

- Alekseev, Mixail E. 2003. *Sravnitel'no-istoričeskaja morfologija avaro-andijskix jazykov*. Moscow: Nauka.
- Bandelt, HJ & AW Dress. 1992. Split decomposition: a new and useful approach to phylogenetic analysis of distance data, *Mol Phylogenet Evol* 1(3): 242-252.
- Bokarev, Evgenij A. 1959. *Cezskie (didojskie) jazyki Dagestana*. Moscow: AN SSSR.
- Comrie, Bernard. 1999. Spatial cases in Daghestanian languages, *Sprachtypologie und Universalienforschung* 52(2): 108-117.
- . 2004. Oblique-case subjects in Tsez, in: Peri Bhaskararao & Karumuri Venkata Subbarao (eds.) *Non-nominative Subjects*. Amsterdam: Benjamins, 113-127.
- Comrie, Bernard & Maria Polinsky. 1998. The great Daghestanian case hoax, in: Anna Siewierska & Jae Jung Song (eds.) *Case, Typology and Grammar*. Amsterdam: Benjamins, 95-114.
- Comrie, Bernard & Helma van den Berg. 2006. Experiencer constructions in Daghestanian languages, in: Ina Bornkessel, Matthias Schlesewsky, & Bernard Comrie (eds.) *Semantic Role Universals and Argument Linking: Theoretical, Typological, and Psycholinguistic Perspectives*. (Trends in Linguistics: Studies and Monographs, 165). 127-154.
- Cysouw, Michael. 2008. Generalizing scales, in: Marc Richards & Andrej Malchukov (eds.) *Scales*. (Linguistische Arbeits Berichte, 86). Leipzig: Institut für Linguistik, Universität Leipzig, 379-396.
- Daniel, Michael, Zaira Xalilova, and Zarina Molochieva. 2007. Ditransitives in Nakh-Daghestanian. Paper presented at Conference on Ditransitive Constructions, Leipzig.
- Dunn, Michael, Angela Terrill, Ger Reesink, RA Foley, & Steve C. Levinson. 2005. Structural phylogenetics and the reconstruction of ancient language history, *Science* 309(5743): 2072-2075.
- Felsenstein, Joseph. 2004. *Inferring Phylogenies*. Sunderland, Mass.: Sinauer.
- Ganenkov, Dimitry. 2005. Kontaknyje lokalizacii v naxsko-dagestanskix jazykax. University of Moscow.
- . 2006. Experiencer coding in Nakh-Daghestanian, in: Leonid Kulikov, Andrej Malchukov, & Peter de Swart (eds.) *Case, Valency and Transitivity*. 179-202.
- Harris, Alice C. and Lyle Campbell. 1995. *Historical Syntax in Cross-Linguistic Perspective*. (Cambridge Studies in Linguistics, 74). Cambridge: Cambridge University Press.
- Haspelmath, Martin. 2003. The geometry of grammatical meaning: Semantic maps and

- cross-linguistic comparison, in: Michael Tomasello (eds.) *The New Psychology of Language: Cognitive and Functional Approaches to Language Structure*. 2). Mahwah, NJ: Erlbaum, 211-242.
- Heeringa, Wilbert. 2004. Measuring dialect pronunciation differences using Levenshtein distance. Rijksuniversiteit Groningen.
- Heeringa, Wilbert, Peter Kleiweg, Charlotte Gooskens, & John Nerbonne. 2006. Evaluation of String Distance Algorithms for Dialectology, Proceedings of the Workshop on Linguistic Distances: 51-62.
- Huson, Daniel H. & David Bryant. 2006. Application of phylogenetic networks in evolutionary studies, *Molecular Biology and Evolution* 23(2): 254-267.
- Kibrik, Aleksandr E. & Yakov G. Testelefs. 2004. Bezhta, in: Michael Job (eds.) *The Indigenous Languages of the Caucasus*. New York, NY: Caravan, 217-298.
- Levinson, Stephen C. & Sérgio Meira. 2003. 'Natural concepts' in the spatial topological domain - Adpositional meanings in crosslinguistic perspective: An exercise in semantic typology, *Language* 79(3): 485-516.
- Newman, John. 1996. *Give: A Cognitive Linguistic Study*. Berlin: Mouton.
- R Development Core Team. 2007. *R: A Language and Environment for Statistical Computing*. Vienna, Austria: R Foundation for Statistical Computing.
- Radžabov, Ramazan. 1999. *Syntaksis tsezskogo jazyka*. Moscow:
- Ribeiro Jr, Paulo Justiniano & Peter J. Diggle. 2001. geOR: A package for geostatistical analysis, *R News* 1(2): 15-18.
- Rice, Sally & Kaori Kabata. 2007. Crosslinguistic grammaticalization patterns of the Allative, *Linguistic Typology* 11: 451-514.
- Saitou, Naruya & Masatoshi Nei. 1987. The neighbour-joining method: A new method for reconstructing phylogenetic trees, *Molecular Biology and Evolution* 4(4): 406-425.
- van den Berg, Helma. 1995. *A Grammar of Hunzib (with Texts and Lexicon)*. (Lincom Studies in Caucasian Linguistics, 1). Munich: Lincom.
- Xalilov, Madžid Š. 1995. *Bežtinsko-Rysskij slovar'*. Maxačkala: Institut JaLI DNC RAN.
- . 1999. *Cezsko-Rysskij slovar'*. Maxačkala: Institut JaLI DNC RAN.
- Xalilov, Madžid Š. and I.A. Isaakov. 2001. *Gunzibsko-Russkij slovar'*. Maxačkala: Institut JaLI DNC RAN.
- . 2005. *Ginuksko-Russkij slovar'*. Maxačkala: Institut JaLI DNC RAN.